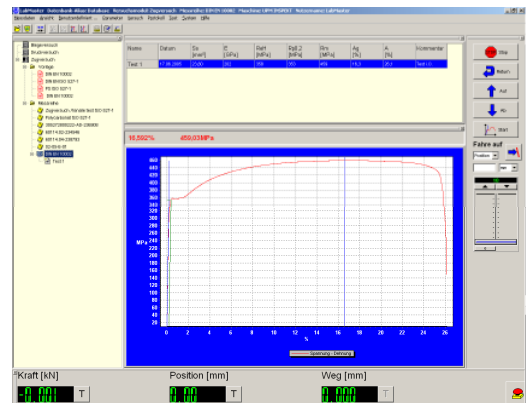
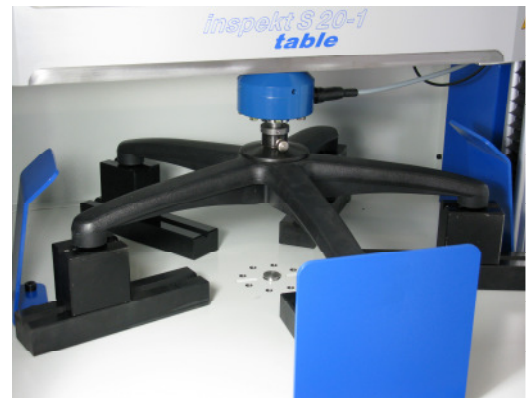


## Universal testing machine for X-bases, furniture components and other various materials



The **universal testing machine Inspekt table 20kN** allows for the testing of X-bases, furniture components, and other various materials (metals, plastics, wood, foamed plastics, fabrics). The machine includes a load cell for 20kN, a support plate for X-bases, a pressureplate and a stand. The test space is **extra wide** and surrounded by a very **robust and highly transparent protective enclosure**, which allows for **exact tracing of the testing procedure until the specimen fails**. The standardised connector system enables quick and easy exchange of the different testing tools for tensile, pressure, shear, and bending tests. This great flexibility is the precondition for the machines large scope of applications. It has the ability not only to test **X-bases**, but also **purchased parts like screws** (material and component testing, like tensile strength,...), **foamed plastics** (compression hardness, deformation,...), **plastics** (tensile strength, extension,...), and **upholstery fabrics**.



**Technical data:**

Field of application	testing of furniture parts and materials under static, increasing, or dynamic load up to the point of failure or to preset limits in development and quality control during batch production
Specimens	X-bases and arm rests of swivel chairs, office swivel chairs, and armchairs; foamed materials for the seats; upholstery fabrics; and also tensile, pressure and bending tests on tables, chairs, cabinets, and on various materials
System configuration	test frame with load cell, support plates, pressureplate, special protective enclosure, stand, manual operation, controller and PC, software blockprogramme, analysis by PC, force measurement, position measurement
Parameter limits	max. load: 20,000 N testing speed: 0.01 – 600 mm/min dimensions of test space 750 x 750 x 1000 mm (length x width x height)
Test procedure	- manual adjustment of the test is possible - fully automatic testing, and possibility to use the blockprogramme (e.g. for hold times, or multiple loading sequences with changing times and loads) - different conditions for break detection and switch off
Data processing	USB 2.0-Interface or LAN
Electrical connection	115/230 VAC/ 50/60 Hz
Dimensions	UTM: 1015 x 850 x 2200 (length x width x height) controller: 290 x 290 x 650 (length x width x height)
Weight	UTM: 300 kg, controller: 20kg
Optional accessories	special clamping tools for various components and materials