



Hegewald & Peschke

Meß- und Prüftechnik GmbH

1D measurement device "light"

For tubes, profiles, poles, bars, belts, cords, cuts...



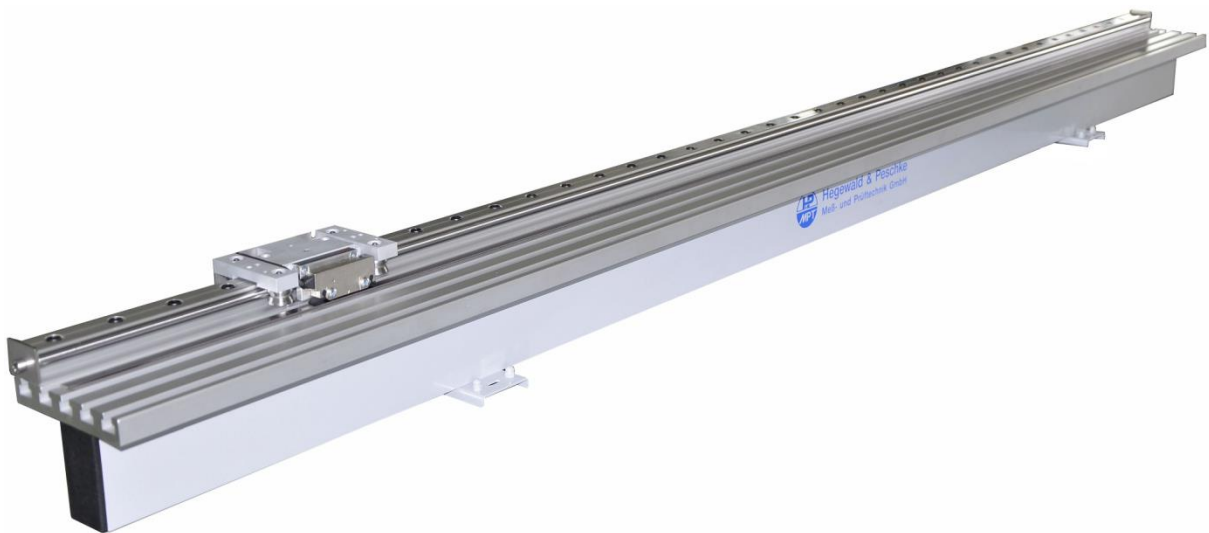
Hegewald & Peschke, Meß- und Prüftechnik GmbH
Am Gründchen 1, 01683 Nossen
Telephone: +49 35242 445-0, Telefax: +49 35242 445-111
E-mail: info@Hegewald-Peschke.de
<http://www.Hegewald-Peschke.com>



General Product description

Our 1D measurement device “light” serves for the length measurement of long, narrow workpieces in the production environment. With this product, we offer a cost-effective alternative exactly for such measurement tasks where a sliding calliper is too short and a measuring tape is too inaccurate. With the 1D measurement device “light”, linear dimensions can be gathered quickly and reliably in the simplest manner.

The concept of the new series “8” places great importance on flexibility and cost effectiveness.



Essential characteristics

- Light-weight, cost-effective construction using high-quality components with deliberate renunciation of not immediately required things
- High-quality, robust measuring system by Magnescale®
- Precise and smooth-running linear guiding
- Universal modular system – the equipment can be individually arranged
- Long-lasting and robust – has proven itself for many years in harsh industrial environments at well-known customers



1D measurement device - basic device

Universal basic device, consisting of:
 Basic carrier made of light metal with T-grooves and linear guiding.
 Movable measuring carriage (for attaching of stops, gauges, optics etc.).
 Magnetic incremental measuring system Magnescale® SL130/PL20C.
 Factory calibration with protocol.

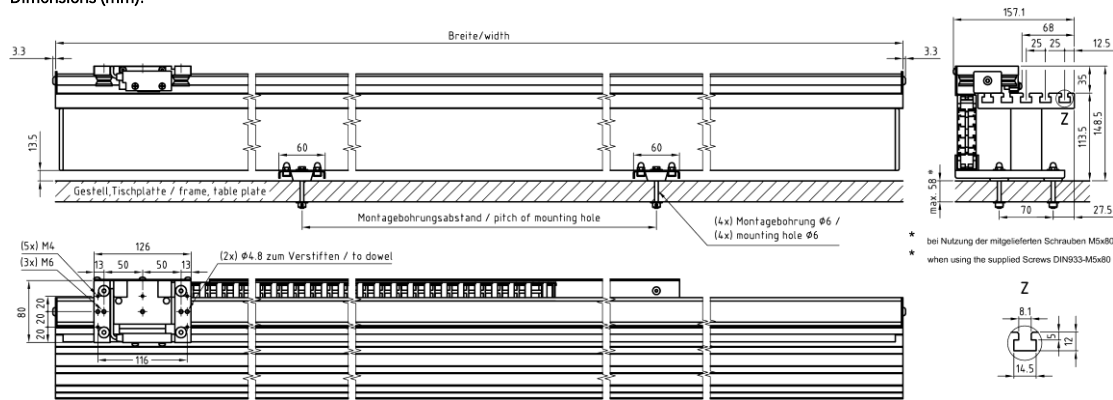


Measuring accuracy: ± (0.06mm + 0.02mm x L), L = measuring length in m

Without display device and accessories (required for operation).

Item no.	Width	Measuring length	Workpiece weight max.	Pitch of mounting hole	Price*
33-011-098	1100 mm	950 mm	15 kg	620 mm	2,929.00 €
33-011-118	1300 mm	1150 mm	15 kg	700 mm	3,100.00 €
33-011-188	2000 mm	1850 mm	12 kg	1240 mm	3,647.00 €
33-011-238	2500 mm	2350 mm	10 kg	1460 mm	4,033.00 €
33-011-288	3000 mm	2850 mm	8 kg	1680 mm	4,564.00 €
33-011-308	3200 mm	3050 mm	6 kg	1780 mm	5,085.00 €
33-011-388	4000 mm	3850 mm	4 kg	2220 mm	5,859.00 €

Dimensions (mm):



Display devices and software



Display unit LY72



Display unit M3 with table base



LG20-1 with table bracket and protective cover



MC150 with table bracket and protective cover

Display unit LG20-1: Magnescale® Display unit with reset/pre-set function. One measuring channel can be connected. Mains adapter PSC23 required.

Display unit LY72: robust Magnescale® multifunctional display unit with large display, measured value plus error message, RS232 interface (HP Keysim required); up to three measuring channels can be connected. Mains adapter PSC23 required.

Display unit M3: digital Display unit M3 (4.3-inch colour touchscreen, can be operated with gloves) incl. RS232 (HP Keysim required) and USB interface, connection adapter cable for Magnescale® measuring system; with USB cable and mains adapter and table base; no installation/no further software required for USB connection (standard keyboard driver for Windows®), HP KeySim for transfer of the displayed measured value via [Print] or external push-button (optional) into active application (e. g. MS-Excel®) and [Enter].

PSC23: Magnescale® tabletop mains adaptor for display units LG/LH/LY. Required for operation. Connection: 230V, max. 32VA.

LG20-1/LY72 with table bracket and mains adapter: Complete set, consisting of display unit, mains adapter and console plate with adapter piece to fasten it to the table. Can be rotated and swivelled. Without protective cover.

Protective cover: Protects display unit, mains adapter and plug connections against damage and pollution. Steel sheet powder-coated with brackets and fastening elements. Can be combined with table bracket LG20/LY72.

MC150 (low-cost alternative to LY72): Industrial counter with RS232 interface. Reset/pre-set function. One measuring channel can be connected. Connection: 230V/ max. 30VA. Delivered completely with holder, mains adapter, protective cover and separate "RESET" and "DATA" key. Without alarm display in case of measuring system error!

HP KeySim: Useful utility programme for direct transmission of the measured values via RS232 interface to any application running under MS-Windows® (e.g. MS-Excel®). An interface cable is included in the scope of delivery.

Item no.		Price*
97928727	Display unit LG20-1, without mains adapter, without holder	440.00 €
97928723	Display unit LY72, without mains adapter, without holder	with RS232 1,683.00 €
97900479	mains adapter PSC23 for LG20 or LY72	45.00 €
33-011-601	LG20-1 with table bracket and mains adapter	621.00 €
33-011-602	LY72 with table bracket and mains adapter	with RS232 1,957.00 €
33-011-604	Display unit M3 with table base and mains adapter	with RS232 & USB 1,370.00 €
32-001-502	protective cover for LG20 or LY72	69.00 €
18-100-01	Software HPKeySim RS232	472.00 €



Measurement accessory standard (series "5")



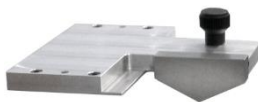
Device with measurement accessories "5"



Workpiece support 5



Fixed stop 5



Mobile stop 5

Workpiece support 5, L=16 mm: Universal workpiece support, prismatic 130°. Suitable for tubes up to D = 150 mm and many other profile shapes. Material: PE. Depending on the sag of the workpiece, two or more workpiece supports are needed. Attached to the basic carrier.

Workpiece support 5, L=350 mm; L=500mm: see above, but suitable for the formation of a continuous support for flexible workpieces, that don't have the stability for punctual bearing (cable, rubber profile, or similar). Destined for the fix installation at the basic carrier (without lower centring)

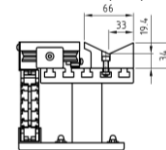
For measuring length

950 mm
1150 mm
1850 mm
2350 mm
2850 mm
3050 mm
3850 mm

Recommended combination:

2 x 500 mm = 1000 mm
1 x 500 mm + 2 x 350 mm = 1200 mm
3 x 500 mm + 1 x 350 mm = 1850 mm
4 x 500 mm + 1 x 350 mm = 2350 mm
5 x 500 mm + 1 x 350 mm = 2850 mm
4 x 500 mm + 3 x 350 mm = 3050 mm
7 x 500 mm + 1 x 350 mm = 3850 mm

Dimensions (mm):



Fixed stop 5: Universal fixed stop with wide touching surface. Suitable for tubes up to D = 150 mm and many other profile shapes. Attached to the basic carrier.

Mobile stop 5: Universal measuring stop with wide touching surface. Suitable for tubes up to D = 150 mm and many other profile shapes. Attached to the measuring carriage

Item no.		Price*
33-011-705	Workpiece support 5, L=16 mm	30.00 €
33-011-735	Workpiece support 5, L=350 mm	104.00 €
33-011-750	Workpiece support 5, L=500 mm	130.00 €
33-011-805	Fixed stop 5	232.00 €
33-011-905	Mobile stop 5	276.00 €

Measurement accessory optics



Prismatic support continuously



Microscope with lines

Prismatic support continuously: For thin poles, sealing profiles, cords, belts etc. which do not have enough strength for point support and for mechanical probing. Can be combined with mobile measuring optics.

Microscope with lines: Consisting of ocular with crosshairs, precision guiding with fine height adjustment, objectives 1:1 and 2.5:1, simple illumination, base plate for fastening at the mobile measuring carriage.

Item no.		For measuring length	Price*
33-011-096-BG03	Prismatic support continuously	950 mm	on request
33-011-116-BG03	Prismatic support continuously	1150 mm	on request
33-011-186-BG03	Prismatic support continuously	1850 mm	375.00 €
33-011-236-BG03	Prismatic support continuously	2350 mm	on request
33-011-286-BG03	Prismatic support continuously	2850 mm	418.00 €
33-011-306-BG03	Prismatic support continuously	3050 mm	on request
33-011-386-BG03	Prismatic support continuously	3850 mm	on request
33-011-901	Microscope with lines for linear measurements	All	1,875.00 €
on request	USB camera with ocular adapter and viewing software	All	on request
on request	LED ring light illumination, operation via USB or mains	All	on request



Accessories for workplace equipment

An ergonomically designed workplace with purposeful equipment is the basis for an efficient performance of tasks. In order to facilitate for you the design of your new measuring workplace as well as the procurement from a single source, we gladly offer you the suitable accessories from the portfolio of the German manufacturer "RAU. Arbeitsplatzeinrichtungen".

You can find information on the prominent reasons for the RAU brand and the entire product range on www.rau-gmbh.de.

In this section, we have compiled a selection of the most frequently used items.

If a workbench is ordered together with a measurement device, then the required fastening bores are drilled into the workplate at the factory.



Workbench

Workplate made of solid beech wood, glue-laminated finger joint, and thickness: 40 mm, surface protection by use of environmentally-friendly refined linseed oil.

Welded construction for high stability and load capacity.

Distributed load: max. 1250 kg.

Powder-coating white aluminium (RAL9006)

Workbenches with a width of 3000 mm have three pairs of feet (= 6 feet).

Can be combined with roller set and/or height adjustment set.

Item no.	W x D x H In mm	Remark	Price*
038000-1-157B4S.12_RAL9006	1500 x 700 x 840	fits with measurement device -098, -118 and -188	336.00 €
038000-1-207B4S.12_RAL9006	2000 x 700 x 840	fits with measurement device -235, -288 and -305	404.00 €
038000-1-307B4S.12_RAL9006	3000 x 700 x 840	three pairs of feet, fits with measurement device -388	672.00 €



Levelling

For levelling the working height of workbenches in frame design.

Black. Slip resistant. Can be retrofitted.

Content: 1 piece, suitable for one foot

Item no.	Content	Price*
09NA45	1 piece Order 4 or 6 pieces	5.00 €



Height adjustment set 4, height adjustment set 6

Adjustment range 200 mm for total height of 840 - 1040 mm or 300 mm for total height of 840 - 1140 mm.

Incl. levelling and anti-slip knob.

Content: 1 set = 4 or 6 pieces, suitable for one workbench with 2 or 3 pairs of feet.

Can be combined with roller set. Can be retrofitted.

Powder-coating white aluminium (RAL9006)

Item no.	Adjustment range	Content	Price*
09HV200-4.12_RAL9006	200 mm	1 set = 4 pieces	50.00 €
09HV300-4.12_RAL9006	300 mm	1 set = 4 pieces	60.00 €
09HV200-6.12_RAL9006	200 mm	1 set = 6 pieces	75.00 €
09HV300-6.12_RAL9006	300 mm	1 set = 6 pieces	90.00 €



Roller set 4LF, roller set 6LF

Steering rollers with locking device, roller Ø 125 mm, design height 150 mm, expander fastening.

Distributed load of the workbench with roller set: max. 450 kg.

Content: 1 set = 4 pieces or 6 pieces, suitable for one workbench with 2 or 3 pairs of feet

Can be combined with height adjustment set. Can be retrofitted.

Item no.	Content	Remark	Price*
09RS125EP-4LF	1 set = 4 pieces	fits with workbench with 4 feet	140.00 €
09RS125EP-6LF	1 set = 6 pieces	fits with workbench with 6 feet	210.00 €



Workbench with lowerable running gear

Workplate made of solid beech wood, glue-laminated finger joint, and thickness: 40 mm, surface protection by use of environmentally-friendly refined linseed oil.

Welded construction for high stability and load capacity.

2 Back- and 2 steering rollers with locking device. Roller Ø 125 mm, design height 150 mm.

Distributed load: max. 1250 kg, in extended position max. 450 kg.

Powder-coating white aluminium (RAL9006)

Item no.	W x D x H in mm	Remark	Price*
058000-6-157B4F.12_RAL9006	1500 x 700 x 880	Suitable for measurement device -098, -118 and -188	624.00 €
058000-6-207B4F.12_RAL9006	2000 x 700 x 880	Suitable for measurement device -235, -288 and -305	712.00 €



Backboard

Height 100 mm

Assembled to the workbench on the rear side.

Can be retrofitted.

Item no.	Width in mm	Price*
09BB1500	1500 (2 pieces = 3000)	25.00 €
09BB2000	2000	33.00 €



Utensil cabinet

Double wing door with changeable door stop.

Lockable.

Welded on at the factory (not suitable for retrofitting).

Item no.	W x D x H in mm	Price*
03US.11_RAL9006	245 x 650 x 360	95.00 €



Base frame drawer

Inside dimensions of drawer: W 490 x D 560 mm.

Extraction mounted on roller bearings, extraction approx. 90%. Bearing capacity: 50 kg. Lockable.

Montage: Welded on at the factory (not suitable for retrofitting).

Item no.	W x D x H in mm	Colour	Price*
03200.1A.10_RAL5010	520 x 650 x 175	RAL5010 (gentian blue)	105.00 €
03200.1A.10_RAL9006	520 x 650 x 175	RAL9006 (white aluminium)	105.00 €



Perforated plate for workbench assembly

With square system perforation.

Including fastening set for workbench assembly.

Can be retrofitted.

Item no.	Height x Width in mm	Price*
09L150DM.12_RAL9006	450 x 1500 (2 pieces = 3000)	94.00 €
09L200DM.12_RAL9006	450 x 2000	114.00 €



Rack

Height 375 mm, depth 300 mm.

Steel plate with raised edge on 3 sides.

Assembled to the workbench.

Can be retrofitted.

Item no.	Width in mm	Price*
09AL1500.12_RAL9006	1500 (2 pieces = 3000)	140.00 €
09AL2000.12_RAL9006	2000	180.00 €



Roller shutter cabinet for CPU

Back board with cable entry (brush mounting included) as well as integrated device fan with ventilator and filter mat (ventilation and dust protection).

For the positioning on the right or left hand side of the table frame.

Welded on at the factory (not suitable for retrofitting).

Item no.	W x D x H mm	Colour	Price*
03300.1.12_RAL9006	360 x 650 x 620	RAL9006 (white aluminium)	215.00 €



Sliding keyboard shelf 2

Assembled to the table frame.

Can be retrofitted.

Item no.	W x D x H mm	Colour	Price*
03TA2.11_RAL9006	720 x 350 x 85	RAL9006 (white aluminium)	175.00 €



Monitor housing

Suitable for monitors up to 26 inches.

Lockable monitor compartment (inside dimensions W 705 x D 280 x H 530 mm) with viewing window (W 545 x H 495 mm). Cable entry integrated into the floor and device fan with dust protection filter).

Open storage compartment under the monitor compartment (compartment height 140 mm), e.g. for keyboard.

Optional positioning on the table board. Can be retrofitted.

Item no.	W x D x H mm	Colour	Price*
075500.11_RAL9006	720 x 300 x 710	RAL9006 (white aluminium)	265.00 €

All prices apply ex works, plus VAT, valid at the time of printing. Misprints and price changes are possible. Request a binding offer. As of 2015-01-15.

Your contact person: