



Hegewald & Peschke

Meß- und Prüftechnik GmbH

Product information

Hydraulic aggregates

for hydraulic grips up to 2500kN



Hegewald & Peschke, Meß- und Prüftechnik GmbH
Am Gründchen 1, 01683 Nossen, Germany
Telephone: +49 35242 445-0, Telefax: +49 35242 445-111
E-Mail: info@Hegewald-Peschke.de
<http://www.Hegewald-Peschke.de>

Application

The hydraulic aggregates are used for all hydraulic grips in a load range from 20 kN to 2500 kN.

Functionality

- Single opening and closing of the grips via the handheld panel of the testing machine (RMC7)
- Automatic shutdown when the pre pressure is reached
- Automatic starting of the main pressure at the beginning of the test
- Different operating modes:
 - One-time pressure
 - Retension at pressure drop
 - Constancy clamping (option)
 - Tension proportional clamping (option)



Fig. 1: Analogue service display for clamping pressure top/bottom and system pressure

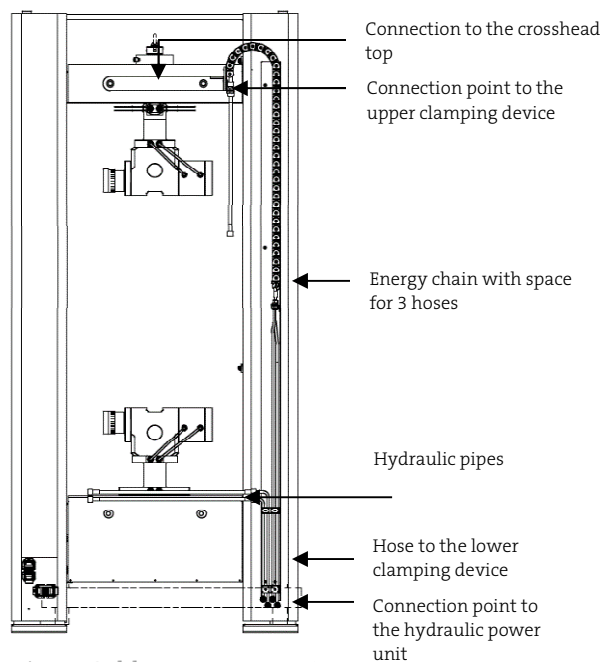


Fig. 2: Cable management

Your contact partner:

Features

Specimen protection

- Highly accurate start-up of the set pressures
- Pre pressure from 35 bar, main pressure from 50 bar
- Soft clamping of sensitive specimen
- Automatic force-holding mode when clamping in conjunction with a universal testing machine
- Automatic specimen pressure regulation for applications with temperature chambers
- Adaptation of the flow rate via a pre-set throttle on the grip specification allows adjustment of the opening and closing speeds of the grip

Safety

- Electrical safety by disconnection from the hydraulic system
- Integration of the unit into the emergency stop circuit of the machine, alternatively stand-alone
- Low noise emission of 64 dB (A) at maximum power
- CE compliant

Compact design

- Easy transport with a pallet transportable and secure positioning thanks to adjustable feet
- Integrated oil tray
- Service manometer for clamping pressure on top / bottom and system pressure (also readable when switched off)
- Additional: digital display of the top / bottom clamping pressure at the front of the unit as well as representation of the clamping pressures as measuring channels in the testing software
 - Status display "Switched on" and "Connected with testing software"



Technical data

Item number (according to maximum main pressure)	350 bar	14-038-101	14-038-111	14-038-121	14-038-131	14-038-141	14-038-151	14-038-171	14-038-181
	500 bar	14-038-201	14-038-211	14-038-221	14-038-231	14-038-241	14-038-251	14-038-271	14-038-281
	700 bar	14-038-301	14-038-311	14-038-321	14-038-331	14-038-341	14-038-351	14-038-371	14-038-381
For grips up to		20 kN	50 kN	100 kN	250 kN	400 kN	600 kN	1200 kN	2500 kN
Pre pressure (low pressure)	35-65 bar								
Max. flow rate at pre pressure	0,2 l/min	0,7 l/min	1,0 l/min	2,4 l/min	4,6 l/min	10,8 l/min	22,3 l/min	35,0 l/min	
Connection / machine type	10S / series Inspekt, Inspekt table					10S / series Inspekt			
Dimensions (WxHxD)	500 x 650 x 800 [mm]					500 x 850 x 850 [mm]			
Oil volume in tank			10 litre						
Hydraulic oil	Initial oil filling on the basis of minerals oil (DIN 51524 T1 and T2) (optional silicone oil AK 100-TK-1 for temperature chambers)								
Weight (with initial oil filling)			160 kg			200 kg			
Connection	CEE 400V 16A 6h, 3L+N+PE, 400V/3/N/PE/50Hz, 10-35°C, 20- 80 % humidity								
Connection power			0,75 kW	1,1 kW	1,1 kW	3,0 kW	3,0 kW		
E-stop	2 channels (PLd, EN ISO 13849-1)								
Continuous load tracking	Constancy clamping (option) or tension proportional clamping * ¹								
Proportional pressure limit valve	Yes								
Pressure sensor in control loop	3 pieces (1x hydraulic supply + 2x clamping circuit)								
Manometer for pressure reading	3 pieces (1x hydraulic supply + 2x clamping circuit)								
Pressure storage	Can be ordered optionally								
Included in delivery	Hydraulic unit Initial oil filling on the basis of minerals oil (DIN 51524 T1 and T2) 2 connection hoses upper clamp 2,8m 2 connection hoses lower clamp 1,5m Instruction manual								
Necessary accessories	Computer control for the hydraulic unit item number 14-038-0xx Handheld panel RMC 7 to testing machine (alternative standalone handheld panel, 14-038-051)								
Optional accessories	System configuration for temperature chamber with initial oil filling silicone oil AK 100-TK-1 Pressure storage for longer holding time in intermittent duty Tension proportional clamping or constancy clamping 18-070-001* ² Cable management for extended machines								

*¹ software option

*² duty cycle 30% S3 to maximum pressure without temperature failure, for 10 minutes useful time (for example: for 3 minutes clamping you need a break of 7 minutes)

Your contact partner:



Housing types

Aggregate 600-2500kN
w500 x h850 x d850 [mm]



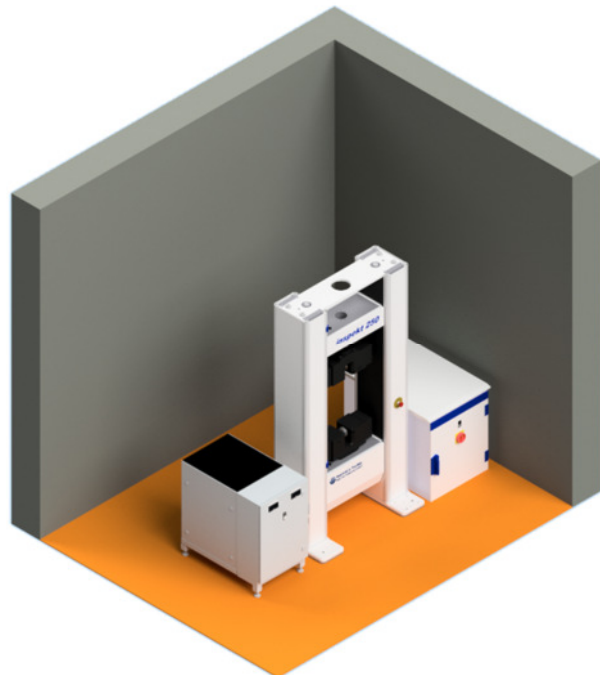
Aggregat 20-400kN
w500 x h650 x d800 [mm]



Installation plans



Variant 1



Variant 2

Your contact partner: