



Product Information

Drop weights for drop test



Item number	Image	Description	Relevant test standard
41-006-710		drop pad for BIFMA arm rest test, surface of drop 8 Zoll total weight 9.1 kg*	BIFMA X5.1
41-006-720		drop pad surface of drop 16 Zoll	BIFMA X5.1
41-006-721		additional test weights for drop impactor (item-nr. 41-006-720) with 5 additional weights of 1 kg each, 1 additional weight of 5 kg and 9 additional weights of 10 kg each	BIFMA
41-006-730		seat impactor for drop test	BIFMA X5.1 EN 1728 EN 1730
41-006-735		impact test device for horizontal glass net weight 19,375g	EN 14072
41-006-740		leather bag for drop test total weight 50kg	EN 581-2
41-006-741		leather bag for drop test filled with steelballs total weight 25kg	EN 581-2
41-006-742		weight bag 16" for drop test without filling In order to meet the requirements for weights mentioned in the test standards, it is necessary to equip the weight bag with appropriate accessory bags (x 40-910-085, x 40-910-087, x 40-910-089)	BIFMA X5.1, X5.11 und X6.1
41-006-743		leather bag for drop test total weight 75kg	NF D61-062

41-006-744



bag of linen without filling

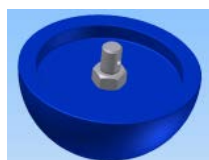
DIN EN 1860-1, ISO 7892

41-006-745

bag 12" without filling
In order to meet the requirements for weights mentioned in the test standards, it is necessary to equip the weight bag with appropriate accessory bags (x 40-910-085, x 40-910-087, x 40-910-089)

BIFMA X6.1

41-006-750



drop weight for drop testing of beds
ø250 mm
total weight 10 kg*

EN 716-2
XP S 54-081
(1999)
EN 12227-2

* The specified weights are only achieved in combination with the following basic H&P drop testers : 41-013-205; 41-013-208; 41-013-210; 41-013-211; 41-013-215 .. -218; 41-013-220 .. -222; 41-013-226
Other than the devices mentioned here are not applied in H&P drop testers.
The moving parts of the above mentioned drop tester have a weight of 5.625kg

Your contact person: